



BAYVIEW
COURTYARD

4-7L

4 BEDS / 3 BATHS

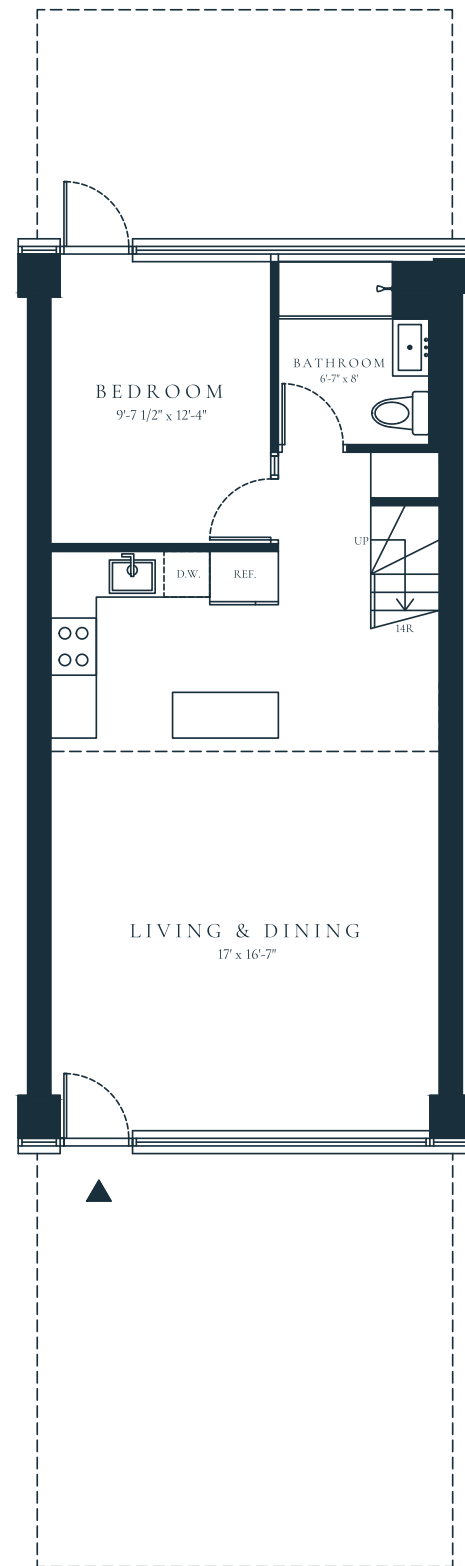
INTERIOR: 1,756 SQ FT

TERRACE: 1,082 SQ FT

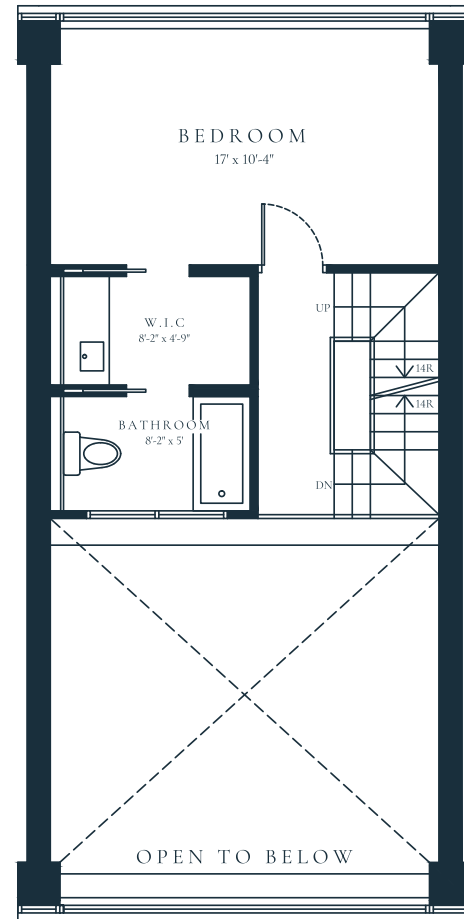
2286 CROPSY AVE.
BROOKLYN, NY 11214

888-918-9888

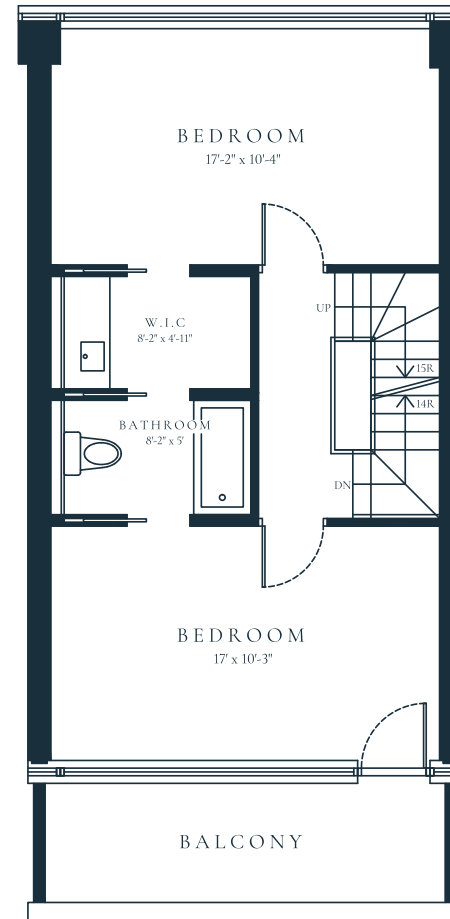
SALES@BAYVIEWCOURTYARD.COM



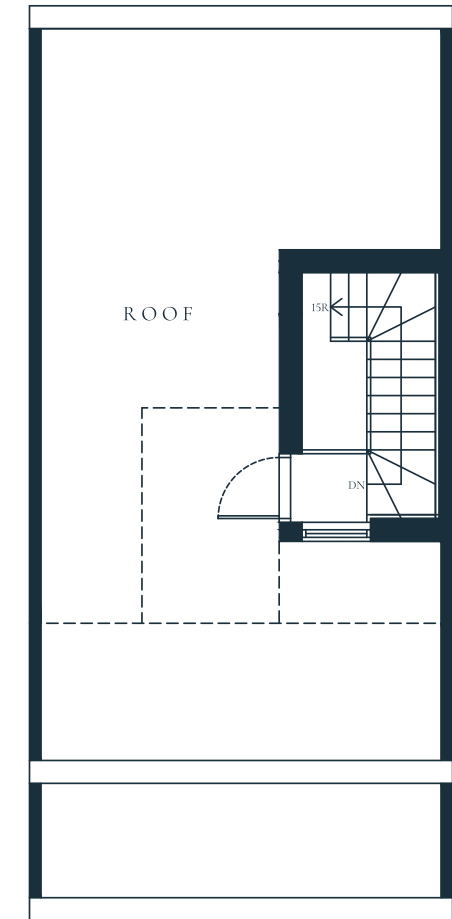
4L



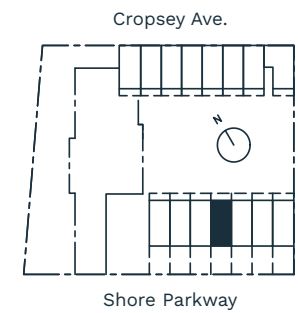
5L



6L



7L



The complete offering terms are in an offering plan available from Sponsor. File No. CP23-0017 Sponsor: Cropsey Partners LLC, 2286 Cropsey Ave., Brooklyn, NY 11214. The unit layouts, square footage, and dimensions are approximate. Sponsor reserves the right to make changes in accordance with the offering plan. Furniture layouts shown are for concept only. Equal Housing Opportunity.

