



BAYVIEW COURTYARD

PH22B

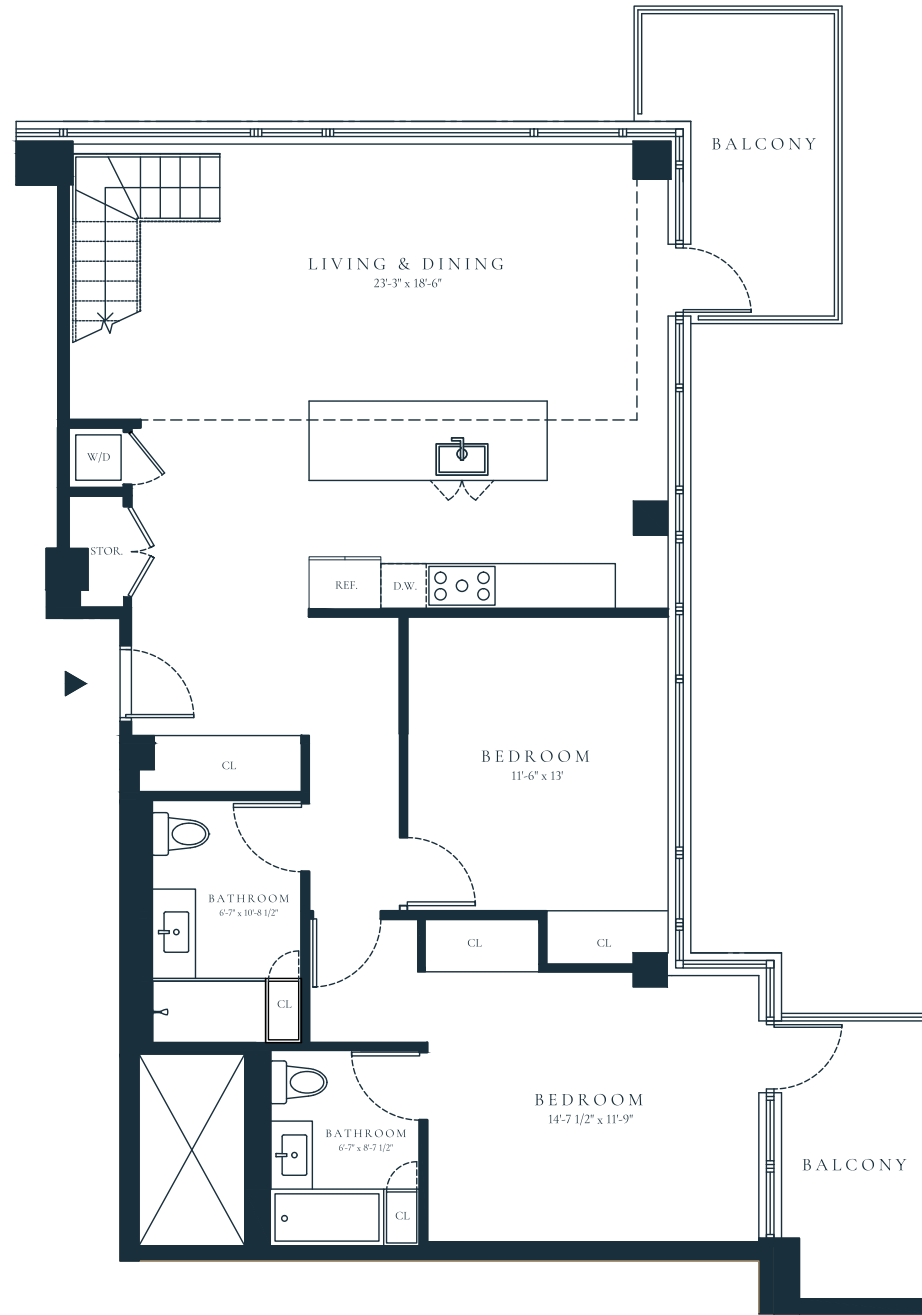
4 BEDS / 4 BATHS

INTERIOR: 1,874 SQ FT
BALCONY: 276 SQ FT

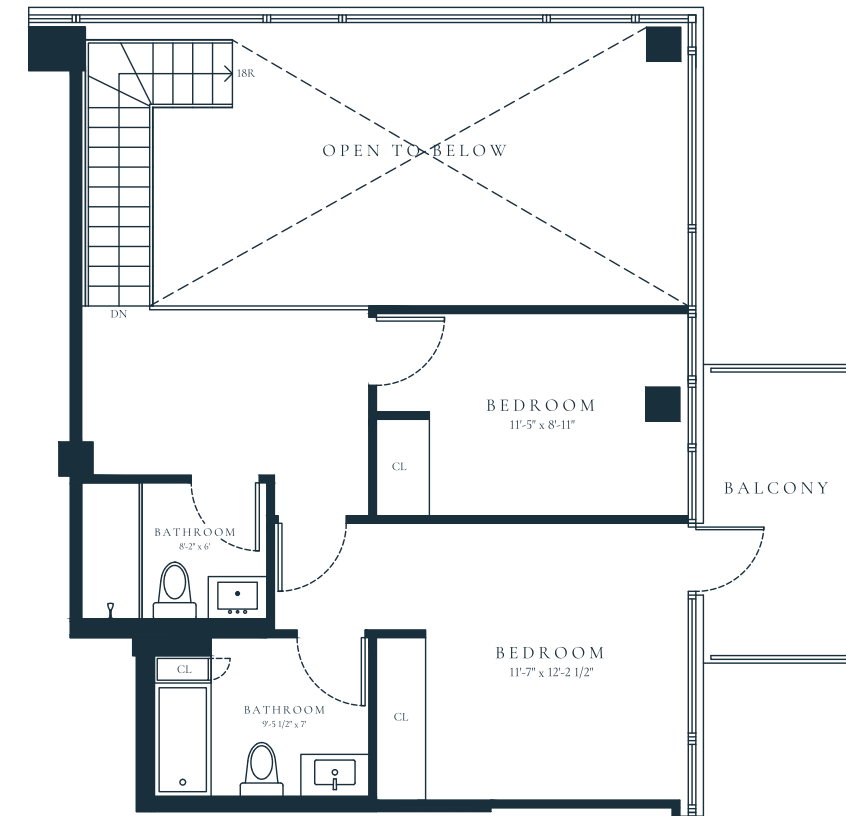
2286 CROPSEY AVE.
BROOKLYN, NY 11214

888-918-9888

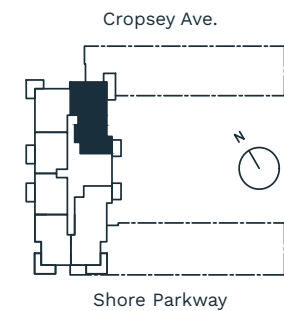
SALES@BAYVIEWCOURTYARD.COM



LOWER LEVEL



UPPER LEVEL



The complete offering terms are in an offering plan available from Sponsor. File No. CP23-0017 Sponsor: Cropsey Partners LLC, 2286 Cropsey Ave., Brooklyn, NY 11214. The unit layouts, square footage, and dimensions are approximate. Sponsor reserves the right to make changes in accordance with the offering plan. Furniture layouts shown are for concept only. Equal Housing Opportunity.

